

- Back**
- o PushPull Power
  - o Flat Cable Connectors SEK
  - o *har-mik®*
  - o D-Sub
  - o InduCom

---

- **Applications**

---

## Product details

---

**09 02 264 6824**

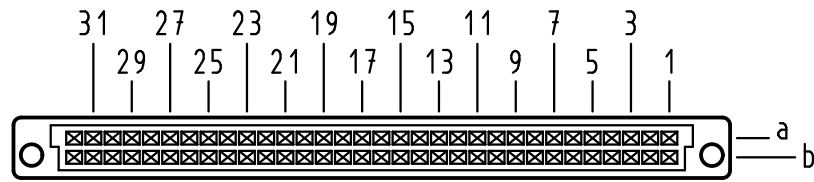
### **Backplane connector**

Type	Type B
Standard/Inverse	Standard
Contact gender	Female contacts
Size	Whole size
Number of contacts	64 poles
Contact arrangement	Rows a and b
Termination	Straight solder pins
Termination length	2,9 mm
Performance Class	Performance level 2 as per IEC 60603-2
Contacts	with contacts
Board fixing	Without fixing
Coding facility	without coding facility
Current	2 A max.
Clearance/ Creepage	1.2 / 1.2 mm min.
RoHS compliant	Yes

**Inquiry**

Alle Rechte vorbehalten/ All rights reserved

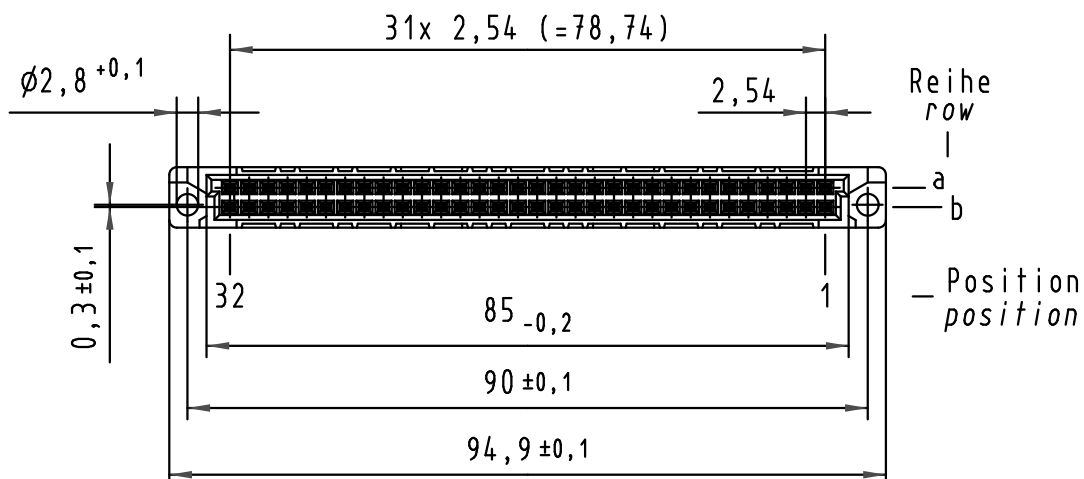
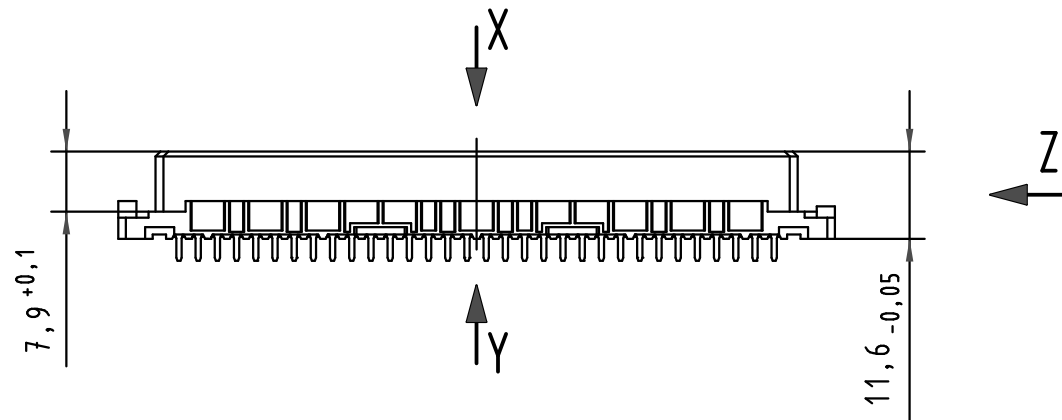
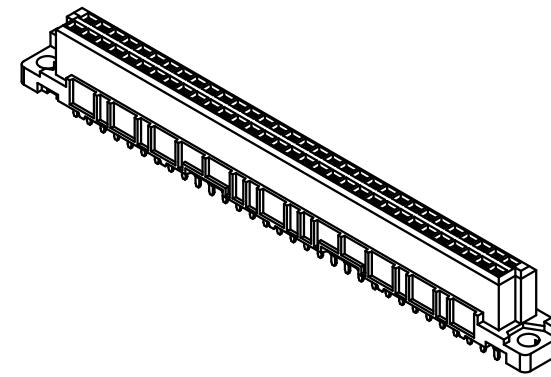
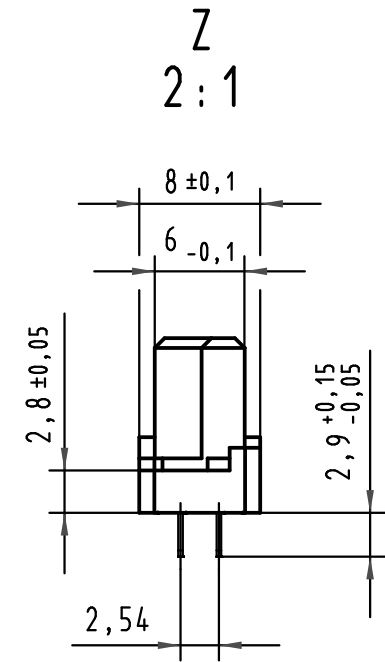
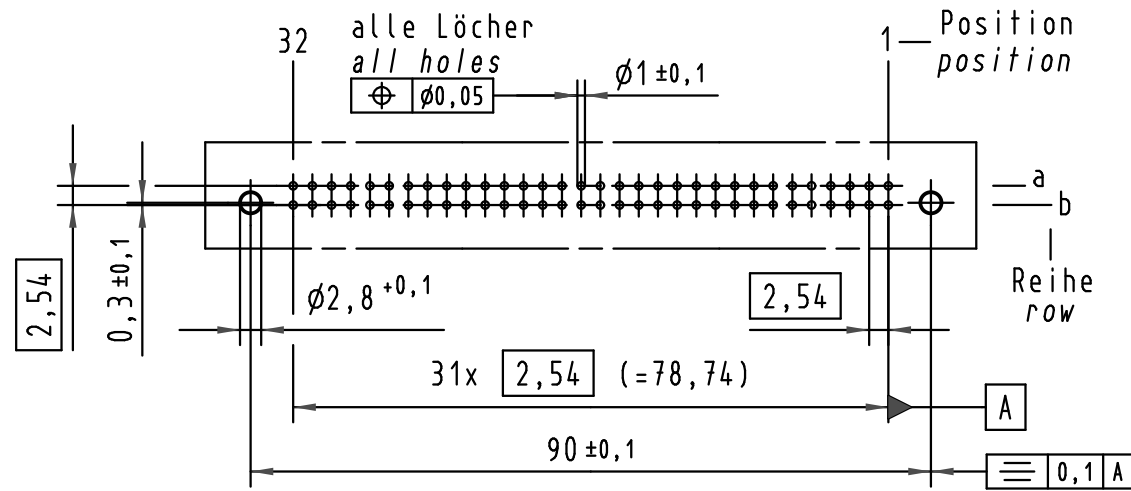
**X**  
Kontaktanordnung  
Contact arrangement



64 Einlöt-Kontakte  
64 solder-contacts

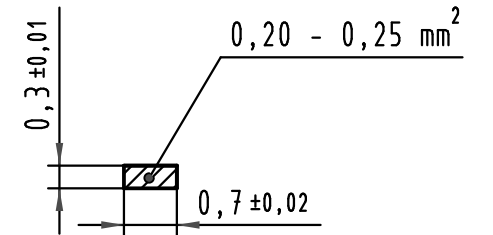
- ☒ = Einlöt-Kontakt  
= solder-contact
- = Kontaktposition nicht belegt  
= position without contact

**X**  
(Lochbild)  
(Board drillings)



**Y**  
10:1

Querschnitt der  
Lötanschlüsse:  
cross-section of  
solder terminations:



-	-	-
09 02 264 6824	2	Au über/over Ni
09 02 264 2824	1	Au über/over Ni
Bestell-Nr. part-no.	Anforderungsstufe nach IEC performance level acc.to IEC	Kontaktoberfläche contact plating

All Dimensions in mm Original Size DIN A 3			Techn. Character.			Nicht tolerierte Maße/Free size tolerances IEC 60603-2			
						har-bus B Federleiste Einlöt 2,9 , 64 pol. har-bus B female connector solder 2,9 , 64 pol.			
			Detail.	Dat.	Name				Maßstab/Scale 1:1 2:1
34306	02.07.07	LehT	Insp.	12.10.99	Pa.				
30231	08.02.02	Rie.	Stand.						
26962	24.01.00	Rie.	HARTING Electronics GmbH & Co. KG				<b>TB 09 02 264 x824</b>	Blatt/ page	
26091			D-32339 ESPELKAMP						
Mod.	Dat.	Name				Sub.			